



File Name: crate v32h manual.pdf
Size: 1481 KB
Type: PDF, ePub, eBook
Category: Book
Uploaded: 1 May 2019, 20:51 PM
Rating: 4.6/5 from 718 votes.

Status: AVAILABLE

Last checked: 8 Minutes ago!

In order to read or download crate v32h manual ebook, you need to create a FREE account.

[**Download Now!**](#)

eBook includes PDF, ePub and Kindle version

[Register a free 1 month Trial Account.](#)

[Download as many books as you like \(Personal use\)](#)

[Cancel the membership at any time if not satisfied.](#)

[Join Over 80000 Happy Readers](#)

Book Descriptions:

We have made it easy for you to find a PDF Ebooks without any digging. And by having access to our ebooks online or by storing it on your computer, you have convenient answers with crate v32h manual . To get started finding crate v32h manual , you are right to find our website which has a comprehensive collection of manuals listed.

Our library is the biggest of these that have literally hundreds of thousands of different products represented.



Book Descriptions:

crate v32h manual

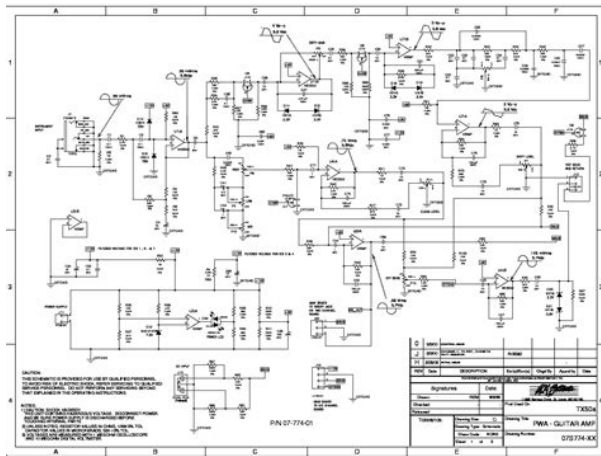


Please do not offer the downloaded file for sell only use it for personal usage. Looking for other manual For this no need registration. May be help you to repair. You could suffer a fatal electrical shock. Instead, contact your nearest service center. Note! To open downloaded files you need acrobat reader or similar pdf reader program. In addition, Also some files are djvu so you need djvu viewer to open them. These free programs can be found on this page needed progs If you use opera you have to disable opera turbo function to download file. If you cannot download this file, try it with CHROME or FIREFOX browser. Translate this page Relevant AUDIO forum topics CRATE BX160 Guitar Amp seeking Schematic. Havent powered it up yet. Reported no output. Similar manuals You can write in English language into the forum not only in Hungarian. Page Count 12 Hidden underneath the amp's cabinet are a pair of heavy duty slideout mounting brackets which can be used to "piggy back" the amplifier onto the top of the Crate V212 Guitar Speaker Enclosure see page 6 for additional information. Like all St. Louis Music amplifiers, your V32H is designed by musicians, and built using the finest components available. Extensive testing confirms that this amplifier is the absolute best it can be. In order to get the most out of your new amplifier, we strongly urge you to read the information contained in this manual before you begin playing. And Thank You for choosing a Crate amplifier. With the control towards the counter clock wise position, the gain is low and very little distortion is present. As you rotate the con trol clockwise the gain increases, producing more overdrive distortion and a higher output volume level. 5. Treble Use this control to adjust the out put level of the high frequencies. This con trol provides 12dB of cut or boost at 6kHz. 6. Boost This switch, when depressed, increases the output by 10dB at 900Hz, giving the middle frequencies more punch.

7. <http://www.sa-grapsas.ibisologismos.gr/admin/uploads/ford-fiesta-2007-service-manual-download.x>

[ml](#)

- **crate v32 manual, 1.0, crate v32 manual.**

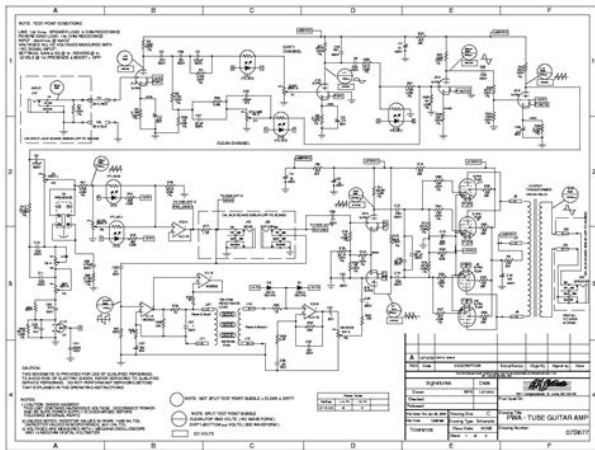


Mid Use this control to adjust the output level of the middle frequencies. This control provides 10dB of cut or boost at 1kHz. 8. Bass Use this control to adjust the output level of the low frequencies. This control provides 8dB of cut or boost at 150Hz. 9. Presence This switch, when depressed, increases the output level of the high frequencies by 8dB at 10kHz, giving a more “glassy” sound to the amplifier. This helps the output of the amplifier cut through “acoustically dead” rooms. 10. Overdrive Level Use this control to adjust the output level of the Overdrive Channel. 11. Reverb Use this control to adjust the amount of reverberation applied to the signal. With the control fully counter clockwise no reverb is applied. Do not attempt to defeat the safety ground connection. 16. Footswitch Use this jack to connect the supplied two-button footswitch for remote control of channel switching and the Boost function. The total impedance rating for the external speakers must be 8 ohms. The Rear Panel 16 17 18 19 **WARNING** The speaker output of this unit can exceed 10 Watts and could be a shock injury. Connection to speakers should be performed by a skilled person in compliance with local building codes. Class 2 wiring is required for speaker cables. Use of external speakers outside the ratings stated at the speaker jack may result in a shock injury or damage to the unit. The V32H has slideout mounting hardware which lock onto the posts on the top of the V212. Loosen the knobs on the posts, slide the amp in place and lock down the knobs. The piggybacked amp can be rolled around on its casters by the amp head’s handle, but do not try to pick the combo up by the amp head or its handle **V32H GUITAR AMPLIFIER HEAD** The door to electronic amplification was now open. During World War II, data gleaned from their intensive research on the detectors used in radar systems led Bell Telephone Laboratories to the invention of the transistor. <http://fine-cottage.ru/userfiles/ford-fiesta-2007-manual.xml>



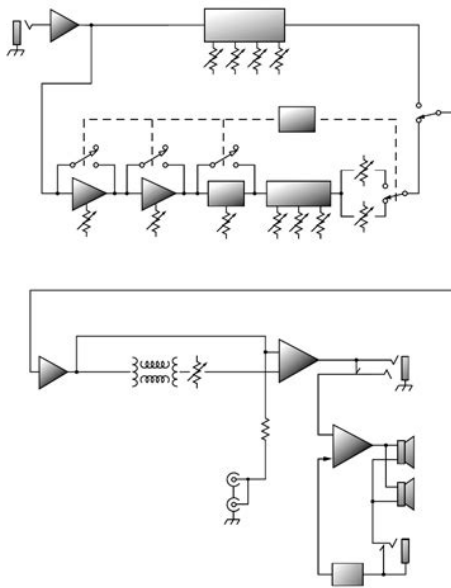
This reliable little device gained quick support as the new component for amplification. The death of the vacuum tube seemed imminent as designers, scientists, and engineers reveled in the idea of replacing large, fragile glass tubes with these small, solidstate devices. They considered the sound produced by these new solidstate devices to be hard, brittle, and lifeless. It was determined that solidstate devices produced a less musical set of harmonics than tubes. When pushed past their limits, they tend to mute the tone and emphasize the distortion. Tubes, on the other hand, produce a more musical set of harmonics, the intensity of which can be controlled by the player. This characteristic adds warmth and definition to the sound which has become the hallmark of tube amplifiers. When tubes are driven into clipping, the harmonic overtones can be both sweet and pleasing or intense and penetrating, depending on the musician's musical taste and playing technique. Over the years, application engineers have designed a number of outstanding solidstate amplifiers that sound very, very good. Some use special circuitry which enables them to simulate the distortion characteristics of a tube amplifier. The tubes used in preamplifiers 12AX7, 12AU7, 12AT7, etc. are smaller than the power tubes. These tubes amplify the signal from your instrument and shape the sound. They are inherently microphonic mechanically pick up and transmit external noises. Preamplifier tubes are also used to drive the power tubes. When used in this application, a 12AX7 will produce a more distorted tone than a 12AT7, which produces a clearer, sweeter sound. When making any modification to your equipment, it is highly recommended that you consult with a qualified service center. The power tubes are the largest tubes used in an amplifier. These tubes convert the lowlevel, conditioned signal from the preamplifier into a level that is sufficient to drive the speakers.

For example, the EL34 power tube produces a great Classic rock sound. When compared to the EL84 and 6L6, the EL34 distorts more quickly, exhibits a big lowend thump and have a very good dynamic range. The EL84 and 6V6 tubes produce a creamy sound with nice distortion. On the other hand, the KT88 produces a big lowend but sounds more like an EL34 in the mid and high frequencies. The 6550 power tubes are more rugged and stay cleaner sounding even at full power. Some tubes are available in matched sets. These tubes have been extensively tested for optimum performance and longevity. The Nature Of Tubes Why And When To Replace Them Tubes are made up of a number of fragile mechanical components that are vacuumsealed in a glass envelope or bubble. The tubes longevity is based on a number of factors which include how hard and often the amplifier is played, vibration from the speakers, road travel, repeated set up and tear down, etc. Any time you notice a change in your amplifiers performance, check the tubes first. If its been a while since the tubes were replaced and the sound from your amplifier lacks punch, fades in and out, loses highs or lows or produces unusual sounds, the power tubes probably need to be replaced. The power tubes are subjected to considerably more stress than the preamplifier tubes. If deteriorating power tubes arent replaced they will ultimately fail. Replacing the tubes before they fail completely has the potential to save you time, money and unwanted trouble. Since power tubes work together in an amplifier, it is crucial that they if there is more than one be replaced by a matched set. If youre on the road a lot, we recommend that you carry a spare matched set of replacement power tubes and their associated driver tubes.



After turning off the power and disconnecting the amplifier from the power source, carefully check the tubes in bright light for cracks or white spots inside the glass or any other apparent damage. Then, with the power on, view the tubes in a dark room. Look for preamplifier tubes that do not glow at all or power tubes that glow excessively red. The driver tube determines the shape and amplitude of the signal applied to the power tubes and has to work almost as hard as the power tubes. You will be able to hear the tapping through your speakers, which is normal. It is not normal for a tube to ring like a bell after it's tapped. If it does ring then it's microphonic and should be replaced. Remember to use only high quality, low microphonic tubes in the preamplifier section. Even though power tubes are rarely microphonic, you should check them anyway. The power tubes can be checked for microphonics just like preamp tubes. In the case of very high gain amps, you may be able to reduce the amount of noise generated by simply swapping the preamp tubes around. The Importance Of Proper Biasing For the best performance and longest tube life, proper biasing is imperative. Bias is the negative voltage which is applied to the power tube's control grid to set the level of idle current. We cannot over emphasize the difference in warmth of tone and dynamic response that come with proper biasing. If the bias is set too high overbiased, the sound from the amp will be distorted at all levels. If the bias is set too low, under biased the power tubes will run hot the plates inside the tubes may glow red due to excessive heat and the sound from the amplifier will lack power and punch. Setting the bias on your amp is like setting the idle on your car. If it's too high or hot it's running away with you and if it's too low or cold it will choke when you step on it. The bias is adjusted at the factory in accordance with the type of power tubes installed in your amplifier.

<http://alliaksesuar.com/images/commonwealth-department-of-health-and-aged-care-documentation-and-accountability-manual-1998.pdf>



It is important to point out that tubes of the same type and specification typically exhibit different performance characteristics. Depending on the model and amplifier type, there may be hum balance controls, trim pots, or bias adjustment controls on its rear panel. However, the bias adjustment should be performed only by qualified service personnel with the proper, calibrated test equipment. CAUTION Tube replacement should be performed only by qualified service personnel who are familiar with the dangers of hazardous voltages that are typically present in tube circuitry. Avoid abrasive cleansers which would damage the finish. The V32H has slideout mounting hardware which lock onto the posts on the top of the V212. Loosen the knobs on the posts, slide the amp in place and lock down the knobs. Using the online preview, you can quickly view the contents and go to the page where you will find the solution to your problem with Crate Amplifiers PALOMINO V32H. To start viewing the user manual Crate Amplifiers PALOMINO V32H on full screen, use the button Fullscreen. However, if you do not want to take up too much of your disk space, you can always download it in the future from ManualsBase. The option to print the manual has also been provided, and you can use it by clicking the link above Print the manual. You do not have to print the entire manual Crate Amplifiers PALOMINO V32H but the selected pages only. paper. If you want to quickly view the content of pages found on the following pages of the manual, you can use them. You are now the proud owner of a Crate V32H Guitar Amplifier Head. Hidden underneath the amp's cabinet are a pair of heavy duty slideout mounting brackets which can be used to "piggy back" the amplifier onto the top of the Crate V212 Guitar Speaker Enclosure see page 6 for additACLine Cord not shown The 18. The V32H has slideout mounting hardware which lock onto the posts on the top of the V212.

<http://gandgengineering.com/images/commonwealth-department-of-health-and-aged-care-documentation-and-accountability-manual.pdf>



Loosen the knobs on the posts, slide the amp in place and lock down the knobs. The door to electronic amplification was noThe EL84 and 6L6 tubes produce a big lowend thump and have a very good dynamic range. The EL84 and 6V6 tubes produce a creamy sound with nice distortion. On the other hand, the KT88 producesYou will be able to hear the tapping through your speakers, which is normal. It is not normal for a tube to ring like a bell after it's tapped. If it does ring then it's microphonic and should be replaced. Remember Louis, Missouri 6. Please check your inbox, and if you can't find it, check your spam folder to make sure it didnt end up there. Please also check your spam folder. Extensive testing confirms that this amplifier is the absolute best it can be. With the control towards the counter clockwise position, the gain is low and very little distortion is present. As you rotate the control clockwise the gain increases, producing more overdrive distortion and a higher output volume level. This control provides 12dB of cut or boost at 6kHz. This control provides 10dB of cut or boost at 1kHz. This control provides 8dB of cut or boost at 150Hz. This helps the output of the amplifier cut through "acoustically dead" rooms. As you rotate the control clockwise the amount of reverb increases. Allow 20 seconds for the amplifier to warm up before turning the Standby switch on. To view this site, you must enable JavaScript or upgrade to a JavaScriptcapable browser. Pickup counter remains closed. Here you will find our collection of Crate schematics. All of these PDF files are available for free download. You will require Adobe Acrobat PDF reader to view these schematics. All rights reserved Back to Top. Get Details As you shop, well only show you items that ship to Russian Federation. If you prefer to see our full catalog, change the ShipTo country to U.S.A.

Click here [Learn More](#) Opens in new window [Learn More](#) Opens in new window [Learn More](#) Opens in new window [Learn More](#) Opens in new window [Learn More](#) Opens in new window [Learn More](#) Opens in new window [Click To Read More About This Product](#) Plug an LP or a 335 into the V32 combo and you wont be able to suppress a smile when you hear this amp perform. White Tolex covering with wheat grille gives the Palomino V32 a boutique look. All Rights Reserved. Publisher does not accept liability for incorrect spelling, printing errors including prices, incorrect

manufacturers specifications or changes, or grammatical inaccuracies in any product included in the Musicians Friend catalog or website. Prices subject to change without notice. September SaleSeptember SaleBe the first to know when one is listed Follow this Product Similar Products From the Price Guide Sell Yours Gallery Product Specs Brand Crate Model Palomino V32 30Watt Tube Guitar Combo Amp Finish Cream Year 2000s Categories Guitar Combo Amps Please check the fields highlighted in red.Currency. But it will be useful to some. I have a Crate V32 which are little diamonds. Crate built some fine tube amps in these and the V16 before they went bust. They are all tube, can be picked up for a song and have everything you need in a tube amp. If you want you can easily modify them. I have made some changes myself that I will post. But mine like most didn't come with a foot switch. I couldn't find one and old Crate foot switches were kind of junky. So I bought a Hosa FSC385 a solid little bugger that was so cheap I couldn't believe it but it had no lights. So sometimes I couldn't tell if I had channel 2 selected or the boost or both or none depending on how I was running my setup. So it was time to add some LED's and it cost me nothing because I had two LED's handy that I've had for 20 years, yep 20 years. Here is how to do it. It is very simple. Before proceeding here is the disclaimer. This works perfect with my V32.

<http://www.gradur.ba/wp-content/plugins/formcraft/file-upload/server/content/files/16287a913a4e28---calculus-stewart-6e-solution-manual.pdf>

The foot switch schematic is shown. As far as I know all V32's are the same. Do not try this with a V16 unless it has the same circuit. If you don't know don't do it. Reference the schematic. What you are doing electrically is putting LED's in parallel with D11 and D15. Those are the two zener diodes that control the transistors for the Channel select circuit and the Boost circuit. When either tip is grounded by the foot switch transistor Q2 or Q3 of each respective circuit will turn on which turns off boost or selects the clean channel. This is normal state. When the foot switch tip is open Q2 or Q3 is turned off and Boost or Dirty Channel is activated and the respective LED's conduct and light up. The LED's draw current via R63 or R68 in their respective circuit. When tip is grounded the LED's are off. Using ohms law the maximum current draw is about 11ma well within range of an LED so no worries. But the LED's are in parallel with the D11 and D15 zeners which limits the voltage across them to 3.3 volts. I measured the LED current draw and it was about 7ma. Follow the pictures and enjoy your new LED's! 20190915T1522130400 Share This Story. Facebook Twitter Reddit WhatsApp Email Related Posts Schecter Refret Gallery Schecter Refret Jackson Refret Gallery Jackson Refret Roasted Maple Refret Gallery Roasted Maple Refret Tele Walnut Control Plates are back. Please try again.Please try again.In order to navigate out of this carousel please use your heading shortcut key to navigate to the next or previous heading. Register a free business account Please try your search again later.They are guaranteed from the manufacturer to be new and free from any defects in materials or craftsmanship and are backed by our 30 Day Warranty.To calculate the overall star rating and percentage breakdown by star, we don't use a simple average. Instead, our system considers things like how recent a review is and if the reviewer bought the item on Amazon.

It also analyzes reviews to verify trustworthiness. Please try again later. Amazon Customer 5.0 out of 5 stars.