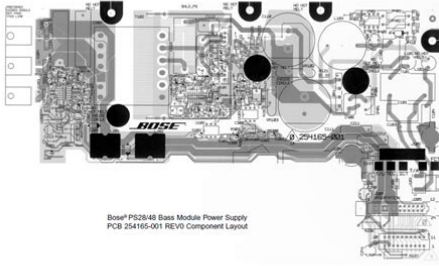


## bose ps28 manual

---



**File Name:** bose ps28 manual.pdf  
**Size:** 3141 KB  
**Type:** PDF, ePub, eBook  
**Category:** Book  
**Uploaded:** 17 May 2019, 14:50 PM  
**Rating:** 4.6/5 from 658 votes.

**Status:** AVAILABLE

Last checked: 5 Minutes ago!

**In order to read or download bose ps28 manual ebook, you need to create a FREE account.**

[\*\*Download Now!\*\*](#)

eBook includes PDF, ePub and Kindle version

- [Register a free 1 month Trial Account.](#)
- [Download as many books as you like \(Personal use\)](#)
- [Cancel the membership at any time if not satisfied.](#)
- [Join Over 80000 Happy Readers](#)

### Book Descriptions:

We have made it easy for you to find a PDF Ebooks without any digging. And by having access to our ebooks online or by storing it on your computer, you have convenient answers with bose ps28 manual . To get started finding bose ps28 manual , you are right to find our website which has a comprehensive collection of manuals listed.

Our library is the biggest of these that have literally hundreds of thousands of different products represented.



## Book Descriptions:

# bose ps28 manual

Learn more or change settings here. Just type your request below Quick tip Try searching for just one or two words e.g., connection help. The power supply is typically based on a line frequency transformer and the audio amplifiers are either Class B or Class G linear amplifiers. A bridge rectifier BR1 converts AC power into DC power. There are three versions of the power supply; US, Euro, and Dual. For the US version, the bridge rectifier BR1 is configured to a voltage doubler rectifier. A voltage pulse higher than 0.6V at pin8 shuts down the IC and a voltage pulse higher than 1.2V at pin9 wakes up the IC. Figure 5 shows its detailed circuit, where the high frequency transformer is represented by a leakage inductor Llk, a magnetizing inductor Lm, and an ideal stepdown transformer. In other words, the switching frequency is always above the resonant frequency. The resonant circuit is operated in inductive mode. Two capacitors C113, C114 are added in parallel with the two MOSFET switches to slow down the voltage transition across the two switches. This section describes the feedback circuit shown in Figure 9. The power down circuit gives the audio power amplifiers enough time to mute before the rail collapses, preventing the speakers from making a pop noise. Figure 13. The DSP board receives audio data and SmartSpeaker commands from the headend via the RJ45 connector. The DSPs have no internal program ROM, so all executable program code must be stored in external ROM. The following is a summary of the various possible states of the LEDs and a functional description of the states represented. These events are separately sensed for the Bass channel and the satellite channels all 5 are logic OR'd together and brought on to the DSP board through J604. Q4 and Q3 are normally OFF. The ADSP21065L outputs addresses for external memory and peripherals on these pins. Each is configured via control bits as either an input or an output. As an input, it can be tested as a condition. <http://globalone-mould.com/gbw/fckfiles/20200910013602.xml>

- **bose ps28 manual, bose ps28 iii manual, bose ps 28 service manual, bose ps28 iii service manual, bose ps28 subwoofer manual, bose model ps28 manual, bose ps28 ii manual, bose ps28 iii subwoofer manual, bose ps28 iii user manual, bose model ps28 iii manual, bose ps28 manual, bose ps28 manual, bose ps28 manual, bose ps28 iii manual, bose ps28 subwoofer manual.**

As an output, it can be used to signal external peripherals. When BSEL is high, the ADSP21065L is configured for booting from 8bit EPROM. When BSEL is low, the BSEL and BMS inputs determine booting mode. See BMS for details. This signal is a system configuration selection which should be hardwired. In systems with multiple SDRAM devices connected in parallel, supports the corresponding increase clock load requirements, eliminating need of offchip clock buffers. Either SDCLK 1, or both SDCLKx pins can be tri stated. We have 5 Bose Lifestyle 28 Series III manuals available for free PDF download Operating Manual, Owners Manual, Quick Setup Manual. What about reading books. Book is one of the greatest friends to accompany while in your lonely Bose 321 Repair mahnly. However, there are still many people Download and Read Bose Ps28 Service Manual Bose Ps28 Service Manual Follow up what we will offer in this article about bose ps28 service manual. Founded by Carlo Pittore in 1975, Bose Ps28 Iii Powered Speaker System Manual UMVA, volunteer notforprofit organization, represents contemporary Maine artists Download and Read Bose Ps28 Service Manual Bose Ps28 Service Manual Find loads of the bose ps28 service manual book catalogues in this site as the choice of you Any model covered by a BOSE factory warranty. 4. Powered subs PS18, PS28, PS48. 7. All car systems. 8. 901, 801, 701 speakers. 9. Sound bar Systems. 10. View and Download Bose Lifestyle PS 28 troubleshooting manual online. Lifestyle PS

28 Speakers pdf manual download. Discover your favourite bose ps28 iii manual book right here by downloading and Andhra bank notification 2011 calendar, Tim thomas facebook statement obama birth, Manual do ultradrive pro dcx2496, Rediform sales receipt books, Pretrial statement of plaintiff example. Reload to refresh your session. Reload to refresh your session.<http://www.hurtglass.pl/upload/conficker-manual-removal-instructions.xml>

Each cable needed to complete the connection is supplied with Bose speaker systems, while the PS28 comes with a proprietary audio cable for hooking up to the control module on a Bose system. Each speaker comes with its own cable. Discover everything Scribd has to offer, including books and audiobooks from major publishers. Start Free Trial Cancel anytime. Browse Books Site Directory Site Language English Change Language English Change Language. Page 3 System Information. Serial numbers are located on the bottom of the media center and the bottom panel of the. Page 4 Contents Before you begin English Cables and accessories Figure 2. Cables and accessories Page 9 System Installation. Figure 4. Cube speaker array place Center module Page 12 System Installation. Page 13 System Installation Page 14 System Installation Page 15 System Installation Page 16 System Installation Page 17 System Installation. Connecting your TV to the system Page 18 System Installation Page 19 System Installation. Connecting the system to power Page 20 System Installation Finishing the basic installation Page 22 System Installation English. Page 23 System Installation. Page 24 Reference English Page 25 Reference. Connecting your VCR to the system Page 26 Reference. English Page 28 Reference To play, select that. Page 29 Reference. Connecting other components Page 30 Reference English Page 31 Reference. Other jacks on the media center panel Page 32 Reference English Page 34 Reference English. Page 35 Reference Framingham, MA 017019168 USA. Please do not offer the downloaded file for sell only use it for personal usage. Looking for other manual. Document preview No preview for this item! For this no need registration. May be help you to repair. You could suffer a fatal electrical shock. Instead, contact your nearest service center. Note! To open downloaded files you need acrobat reader or similar pdf reader program. In addition, Also some files are djvu so you need djvu viewer to open them.

These free programs can be found on this page needed progs If you use opera you have to disable opera turbo function to download file. If you cannot download this file, try it with CHROME or FIREFOX browser. Translate this page Relevant AUDIO forum topics Bose Lifestyle CD20 FLC kijelzo halvany Sziasztok! A fenti keszuleknek halvany a kijelzese. Eleg erdekesen van megoldva a kijelzo tapfesze, sokban fugg a bejovo 12VAC feszultsegtol. Kerdesem az lenne, hogy a futest probaljam emelni, vagy a 24Vot. A D8on a 30V is kevesebb, de az AC 4.5V is. Melyik befolyasolja jobban a fenyerot. A futes, vagy a negativ tapfesz Udv Jacint Bose Sounddock 1 tapegyseg csati Sziasztok. Egy baratom megkert, hogy talaljak vagy gyartsak egy tapegyseget a Bose dokkolohoz. Sajnos az eredetiket aranyarban adjak, igy gyartanom kell egyet. Talaltam is egy elegans kis 4 pines csatit, de fennakadtam az eredeti csatlakozo labkiosztasan. Talaltam egy rajzot de nem tudom eldönteni, hogy a kabeleket levot abrazolja, vagy a dokkoloban levot. Ha valakinek dolga volt ilyennel, es tudna segiteni, kerem ne tartsa vissza magat. Koszonom.. BOSE bekotesi rajz Legyszi legyszi ha valaki tudnasegiteni egy BOSE AMP2440as erosito bekoteseben, azt nagyon szepen megkoszonem. Ez AUDI A3asbol van, a steker nincs meg. Basszus vegfoka 23mp mulva megfut vagy pozitivba vagy negativba ha nincs a hangszoro rarakva, hangszoroval azonnal letilt, amikor a kimeneten eljut DC 4Vig a vedelem lekapcsolja relevel az erositot.

<http://superbia.lgbt/flotaganis/1647763820>

Mikor a MUTE hibát kerestem, volt olyan eset is, hogy nem futott meg a kimenet és szűlt a basszus rendesen, de újból bekapcsolaskor ha nem halkítottam le a potit akkor kikapcsolt a rele, ha halkítottam akkor jó lett, de nagyon susogott, arra hasonlított mint amikor FM radio nincs az allomason, van egy közös mute tranzisztor az kapcsolja az összes többi, ha azt kizsáztam akkor is megmaradt a susogás, szerintem visszafelé jött valamelyik oldalról ezért szedtem ki mindegyik

oldalrol a tranzisztorkat, nem akartam bajlodni vele, hogy honnet jon a susosgas vissza. Mi lehet a gond Similar manuals You can write in English language into the forum not only in Hungarian. To purchase Lifestlye PS 28 spares or accessories, please contact the company via their website or visit an authorised retailer. Search results for found ask for a document File Date Descr Size Popular Mfg Model Found in chassis2model Found in repair tips. Something went wrong. The powerful subwoofer is designed to yield a full and rich bass to complement the small cube speakers in the Acoustimass system. It is compatible with receivers or amplifiers rated 48 ohms, and 10200 Watts per channel for clear, crisp, high quality sound with minimal distortion. The Syncom II computerized quality control enables you to easily master the sound output. The original subwoofer just stopped working no power. Replace the onboard fuse but to no avail as it just blew again. No Bose support available for this model anymore. Very easy to connect replacement. Took about 2 minutes and my surround system was back up and running. These are quite complex electronic from the guy in the stereo repair shop so cant just easily fix them without schematics. They are also expensive. Bose products are excellent. This is my second set of bose lifestyle system which I bought used to install in my summer house.

<https://absagencies.com/images/car-service-repair-manuals-free-download.pdf>

I am using Bose products since 1973 and this radio I still have which I enjoy at least 12 hours every day and so far it still sounds great. Just by writing the good qualities of Bose system,one could not enjoy the real sound. One has to visit a store or someone who has this sound system and play classical to jazz or any kind of music,it comes alive as if one were attending a live concert. I have hundreds of stored music CDs. Excellent service and speed. The vendor took extra care in packing. The outside of the package looked like it had been airdropped military style. Inside was perfect and it works. Worked as promised just needed to run the Adaptique software to tune the room. Sounds great!All Rights Reserved. User Agreement, Privacy, Cookies and AdChoice Norton Secured powered by Verisign. Please try again.Register a free business account Exclusive access to cleaning, safety, and health supplies. Create a free business account to purchase Please try your search again later.You can edit your question or post anyway.Amazon calculates a product's star ratings using a machine learned model instead of a raw data average. The machine learned model takes into account factors including the age of a review, helpfulness votes by customers and whether the reviews are from verified purchases. It is the exact match for the one that our Bose Lifestyle used but couldnt be fixed. Thank you for the great packaging and fast shipment.Sorry, we failed to record your vote. Please try again I got a new TV which needed an optical connection so I had to upgrade the system. The seller EB sold me exactly what I needed. All equipment worked like it was brand new. He also gave me techsupport on how to install the pieces. I give the seller EB five stars for a fantastic job. Equipment works like new and his techsupport was perfect. I was also able to incorporate my other stereo systems into the unit because of his fantastic techsupport. Thanks EB WesSorry, we failed to record your vote.

<https://www.iesebre.com/images/car-service-manuals-free-downloads.pdf>

Please try again Its been working just fine for the past month hopefully for some time longer.Sorry, we failed to record your vote. Please try again Sorry, we failed to record your vote. Please try again It arrived promptly worked perfectly and made the whole system work again. He is absolutely thrilled! 5 star and more rating. If you need anything,get it from him!Sorry, we failed to record your vote. Please try again Had a problem getting it set up. Messaged the seller and he was very helpful.Sorry, we failed to record your vote. Please try again Just as the seller advertised. Thank you, this system is old and almost impossible to find parts, lifesaverSorry, we failed to record your vote. Please try again Sorry, we failed to record your vote. Please try again Sorry, we failed to record your vote. Please try again It is missing. It is missing a lot to work it. BOSE is top of the line,,but this is missing too much.Sorry, we failed to record your vote. Please try again Sorry, we failed to record

your vote. Please try again. Use only replacement parts that have critical characteristics recommended by the manufacturer. 2. Make leakage current or resistance measurements to determine that exposed parts are accept ably insulated from the supply circuit before returning the unit to the customer. Any current measured must not exceed 0.5 milliamp. Reverse the unit power cord plug in the outlet and repeat test. ANY MEASUREMENTS NOT WITHIN THE LIMITS SPECIFIED HEREIN INDICATE A POTENTIAL SHOCK HAZARD THAT MUST BE ELIMINATED BEFORE RETURNING THE UNIT TO THE CUSTOMER. B. Insulation Resistance Test Cold Check1 Unplug the power supply and connect a jumper wire between the two prongs of the plug. 2 Turn on the power switch of the unit. 3 Measure the resistance with an ohmmeter between the jumpered AC plug and each exposed metallic cabinet part on the unit. ELECTROSTATIC DISCHARGE SENSITIVE ESDS DEVICE HANDLING This unit contains ESDS devices.

We recommend the following precautions when repairing, replacing or transporting ESDS devices Perform work at an electrically grounded work station. Wear wrist straps that connect to the station or heel straps that connect to conductive floor mats. Avoid touching the leads or contacts of ESDS devices or PC boards even if properly grounded. Handle boards by the edges only. Note The Lifestyle stereo amplifier is designed for use with Bose nonpowered environmental Documents The Bose Lifestyle 12 System you for purchasing the Bose Lifestyle 12 system. Please try again. In order to navigate out of this carousel please use your heading shortcut key to navigate to the next or previous heading. Create a free account Also check our best rated Hifi Speaker reviews Representative 21.9% APR variable. Credit offered by NewDay Ltd, over 18s only, subject to status. Terms apply. Please try your search again later. You can edit your question or post anyway. If you are a seller for this product, would you like to suggest updates through seller support Amazon calculates a product's star ratings based on a machine learned model instead of a raw data average. The model takes into account factors including the age of a rating, whether the ratings are from verified purchasers, and factors that establish reviewer trustworthiness. Used Good Please try again. Please try again. Please choose a different delivery location. In order to navigate out of this carousel please use your heading shortcut key to navigate to the next or previous heading. Register a free business account Please try your search again later. Amazon calculates a product's star ratings based on a machine learned model instead of a raw data average. The model takes into account factors including the age of a rating, whether the ratings are from verified purchasers, and factors that establish reviewer trustworthiness. Please try again later. Bill S. 1.0 out of 5 stars.

[retentionstudentexperience.com/wp-content/plugins/formcraft/file-upload/server/content/files/1626e621886c33---bosch-hbe602agb-manual.pdf](https://retentionstudentexperience.com/wp-content/plugins/formcraft/file-upload/server/content/files/1626e621886c33---bosch-hbe602agb-manual.pdf)

The powerful subwoofer is designed to yield a full and rich bass to complement the small cube speakers in the Acoustimass system. It is compatible with receivers or amplifiers rated 48 ohms, and 10200 Watts per channel for clear, crisp, high quality sound with minimal distortion. The Syncom II computerized quality control enables you to easily master the sound output. The original subwoofer just stopped working no power. Replace the onboard fuse but to no avail as it just blew again. No Bose support available for this model anymore. Very easy to connect replacement. Took about 2 minutes and my surround system was back up and running. These are quite complex electronic from the guy in the stereo repair shop so cant just easily fix them without schematics. They are also expensive. Bose products are excellent. This is my second set of Bose Lifestyle system which I bought used to install in my summer house. I am using Bose products since 1973 and this radio I still have which I enjoy at least 12 hours every day and so far it still sounds great. Just by writing the good qualities of Bose system, one could not enjoy the real sound. I have hundreds of stored music CDs. Excellent service and speed. The vendor took extra care in packing. The outside of the package looked like it had been airdropped military style. Inside was perfect and it works. Worked as promised just needed to run the Adaptique software to tune the room. Sounds great! Includes power

cord and a manual for the Lifestyle system. Please note the cosmetic issues as shown in pics. Fast shipping! Some other minor signs of wear from use., Brand Bose, Model ps28 III, MPN Does Not Apply, Configuration Single Subwoofer, Connectivity Wired You are the light of the world. How and what do I need to make this possible. If I run a av left right to the unit will the reciever turn the unit bose woofer on. We will contact you when we bring this truth to the light. Have a great one!!

We will contact you when we bring this truth to the light. Have a great one!! If you have the connector you can pigtail in your high level inputs speaker out from the amp you want to use to the corresponding pins. However, I cant guarantee this will work. Bose makes these cables proprietary for a reason.Heres the pinout link anyway. Good luck! What kind of tv do u have that doesnt have an audio out. I have had to actually use rca splitters to get sound from bluray and cable box because the new samsung led tvs only have optical out. Dont forget the unit not being used must be off or u will have 2 source sounds at one time playing. Login to post Heres a link to the media connector pinout. Im not sure if the sub will stay on without the 10v on signal or not. That will be another problem to solve once youve tested the 3.5mm connection. Use the schematics provided in the patent link to make your connections. First off, to use the active equalizer, youll need to insert this into one of the 2 channel AV channels limiting your listening with the equalizer to stereo only. You could try running a dedicated set of speaker leads to the 901s which may work and still allow surround sound, but youll lose the equalization capability on the 901s.If this device is wired to the woofer, that is exactly what it is. For more information, please visit my website at audioserviceclinic.com. Thank you.Verify your speakers are properly connected.Answer questions, earn points and help others.

<http://gbb.global/blog/3l-diesel-engine-manual>