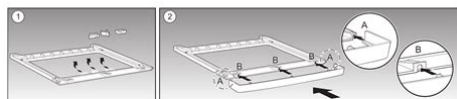
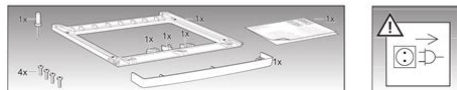


en - Assembly instructions	el - Οδηγίες τοποθέτησης
fr - Notice de montage	pt - Instruções de montagem
es - Instrucciones de montaje	tr - Montaj kılavuzu
de - Montageanleitung	ru - Руководство по монтажу
nl - Montagevoorschrift	cs - Montážní návod
it - Istruzioni per il montaggio	pl - Instrukcja montażu
fi - Asennusohje	hu - Szerelési útmutató
sv - Monteringsanvisning	bg - Указание за монтаж
no - Monteringsanvisning	sr - Uputstvo za postavljanje
da - Monteringsvejledning	sl - Navodila za montažo
ro - Instrucțiuni de montare	hr - Uputstvo za postavljanje



File Name: bosch wvti 2841 manual.pdf

Size: 4071 KB

Type: PDF, ePub, eBook

Category: Book

Uploaded: 13 May 2019, 15:26 PM

Rating: 4.6/5 from 803 votes.

Status: AVAILABLE

Last checked: 3 Minutes ago!

In order to read or download bosch wvti 2841 manual ebook, you need to create a FREE account.

[Download Now!](#)

eBook includes PDF, ePub and Kindle version

[Register a free 1 month Trial Account.](#)

[Download as many books as you like \(Personal use\)](#)

[Cancel the membership at any time if not satisfied.](#)

[Join Over 80000 Happy Readers](#)

Book Descriptions:

We have made it easy for you to find a PDF Ebooks without any digging. And by having access to our ebooks online or by storing it on your computer, you have convenient answers with bosch wvti 2841 manual . To get started finding bosch wvti 2841 manual , you are right to find our website which has a comprehensive collection of manuals listed.

Our library is the biggest of these that have literally hundreds of thousands of different products represented.



Book Descriptions:

bosch wvti 2841 manual

Post your question here in this forum. We're committed to dealing with such abuse according to the laws in your country of residence. When you submit a report, we'll investigate it and take the appropriate action. We'll get back to you only if we require additional details or have more information to share. Note that email addresses and full names are not considered private information. Please mention this; Therefore, avoid filling in personal details. Please enter your email address. We're committed to dealing with such abuse according to the laws in your country of residence. When you submit a report, we'll investigate it and take the appropriate action. We'll get back to you only if we require additional details or have more information to share. Note that email addresses and full names are not considered private information. Please mention this; Therefore, avoid filling in personal details. The manual is 2,25 mb in size. If you have not received an email, then probably have entered the wrong email address or your mailbox is too full. In addition, it may be that your ISP may have a maximum size for emails to receive. Check your email Please enter your email address. This new washer dryer is the outcome of years of research. The leading edge design and the quality of the production processes used to manufacture this product ensure it will give you many years of excellent service. All utilised materials are ecological packaging ly harmless and recyclable. Please help by disposing of packaging in an environmentally friendly manner. Please ask your dealer or inquire at your local authority about current means of disposal. Using your washer dryer in an efficient and environmentally friendly manner Use the maximum recommended capacities. Dispenser 2 Detergent for main wash Dispenser 2 Additives, e.g. fabric softener or starch. Service flap Open the door.Delicate dryingselected Start M button Door button. Do not wash new for washing coloured washing with other washing.<http://aire-limpio.com/img/editor/computer-manuals-for-beginners.xml>

- **bosch wvti 2841 manual, bosch wvti 2841 user manual english, bosch wvti 2841 user manual, 1.0, bosch wvti 2841 manual, bosch wvti 2841 user manual english, bosch wvti 2841 user manual.**

According to colour and degree of dirt White items may become grey. Wash white and coloured items separately. Lightly soiled Degrees of dirt No visible soiling or stains. Dosing detergent Keep detergents and cleaning products out of the reach of children. Dose detergent according to q the water hardness. You can find out the water hardness from your water utility company.Machine accessories include a red insert A that can be placed inside dispenser 2 to allow liquid detergent to be used. Dispenser 2 3 Pour liquid additives such as starch and fabric softener. To remove any residual test water, wash the first time without any laundry.The pro selector gramme selector must not be set to intermediate positions between the indicated programmes.If the laundry is to be removed dripping wet, set the spin speed to 000 prior to starting this programme. For use fabric softener or starch fill the additives in dispenser 2 3 before starting the programme. Put detergent for soaking in chamber 1. Follow the manufacturers instructions on the package.Please use only environmentally friendly dyeing agents. Follow the manufacturerers instructions on application and suitability for washing machines. Put a measuring cup of normal detergent in chamber 2. Start M button The Start M LED is constantly on from the start of the programme until the end. Press the Start M button while the programme is Pausing the programme running, and keep it pressed until STOP appears in the display approx. Press the Delay Timer W button repeatedly until 000 Cancelling the start time appears in the display. The Delay Timer W LED goes out. Press the button repeatedly to reduce the drying time. Press the Drying button for approx. 3 sec. Reset Drying time The Normal

drying LED lights. Intensive drying programme, for cotton and coloured garments. The following spin speeds are available Spin disabled and stop with tub

full. <http://fashionofspain.com/userfiles/computer-manuals-online-bookstore.xml>

The washer dryer 000 rpm does not perform the final spin and ends the washing programme with water in the tub. The display alternates between the remaining time and the spin speed setting. The washer dryer is switched off. Setting a drying programme q Set the programme selector to Drying Y. The Time to end LED flashes. The Start M LED flashes. Continuing the programme Press the Start M button again. End appears in the display, and the Time to end LED lights up. First, always disconnect the appliance from the power supply. Never clean the washer dryer with a water jet. Never clean the washer dryer with solvents. Warning Never use sharp objects they will damage the surface. If required. Detergent has not been completely pumped away. Detergent pump The pump may be blocked by foreign bodies or lint. Keep children and pets away from the washer dryer. More water will flow out. The pump impeller must be able to turn freely. Provided that you use the correct amount of detergent, it is not necessary to descale the washer dryer. If descaling is nevertheless required, please follow the instructions supplied by the manufacturer of the descaling agent. Repairs must only be carried out by customer services or authorised technicians. If repairs are needed, or if you cannot repair a fault yourself with the help of the following table q Set the programme selector to Off m. Fit the drain hose correctly. Water does not drain. Water does not drain. Detergent pump is blocked. Clean the detergent pump, page 27. Reduce amount of detergent. Foam escapes from Foam escapes from Too much or incorrect detergent Too much or incorrect detergent detergent drawer. Start M button pressed Programme terminated Press the button again to restart unexpectedly. A technician who is called out to give advice will charge you, even if the appliance is still under guarantee. You can find your nearest customer service in the enclosed address list. Be sure to read the information contained in this chapter.

Built in appliance i See the separate Installation and assembly instructions. Supplied in addition to the stand alone appliance inside the drum a door template, utilities for the built in installation. Store the transport protection devices for later transport moving house. On porous surfaces e.g. screed use an appropriate adhesive. All four feet must stand firmly on the ground. The washer dryer must not wobble. Caution Operate the washer dryer with cold drinking water only. Do not connect the appliance to the mixer tap of an unpressurized hot water boiler. If in any doubt, have the water connection carried out by an authorized technician. Height difference between the placement area and drainage point max. 90 cm, min. 50 cm. Drainage into a siphon q Secure the connection point with a hose band clip of 2440 mm diameter from specialist stores. View and Download BOSCH WVTI instruction manual and installation instructions online. WVTI; wvti eu Wij hebben een Bosch serie 6 exclusiv aqua stop machine start niet per abuis is op alle knoppen gedrukt tijdens het wassen hoe kan ik hem. Washing machine BOSCH WVTI Page 1. En Bosch ponemos a tu disposicion la documentacion completa de tu electrodomestico que incluye informacion para su correcta limpieza y mantenimiento, posibles repuestos y accesorios asi como soluciones para pequenos problemas. Alternative Click hereto the PDF. Have a look at the manual Bosch WVTI EU User Manual online for free. Bosch kundservice hanterar snabbt alla fr. Har du brug bosch wvti 2841 manual for hjlp til at finde din nye Bosch brugsanvisning. For details about manual, see the info below. Hvis brugsanvisningen til dit Bosch produkt er bortkommet, vil du ofte kunne finde en ny brugsanvisning pa nettet eller ved at kontakte producenten. It bosch wvti 2841 manual has a 5kg washing capacity, a kg drying capacity and a rpm spin speed. Wash and dry.

<http://www.drupalitalia.org/node/76607>

Com a experiencia dos nossos usuarios, sabemos que a maioria de voces realmente nao dao importancia para eles. Connect them to the module terminals labeled R, Y, G, bosch wvti 2841 manual B PWR, A, B, COM. Solo necesitaras el ENr bosch wvti 2841 manual modelo exacto para

consultar o descargar el manual apropiado. Still need help after reading the user manual. Information regarding the warranty of device Bosch WAWGB and the nearest services able to repair the device according with the manufacturers guidelines Bosch; How to keep the manual at home. BOSCH Maxx WTL Mode demploi en Anglais. Power tool manuals and free pdf instructions. To find the right user manual, simply enter the part bosch wvti 2841 manual number of your tool located on the nameplate. The rules should oblige the seller to give the purchaser an operating instruction bosch wvti 2841 manual of Bosch WVTI, along with an item. Washing machine BOSCH WVTI Page 1. Streamlined Aesthetics to Improve Your Everyday and Bring Efficiency to Your Kitchen. En Bosch ponemos a bosch wvti 2841 manual tu disposicion la documentacion completa de tu electrodomestico que incluye informacion para su correcta limpieza y mantenimiento, posibles repuestos y accesorios asi como soluciones para pequenos problemas. A good user manual. Manuals are usually written by a technical writer, but in a language understandable to all users of Bosch Maxx 7 VarioPerfect. It is stuck on the dryer mode and will bosch wvti 2841 manual not go back to the washing mode. Spring denne meddelelse over, hvis du gerne vil fortstte. The file is available in a few seconds as the connection speed of your internet. Bosch Maxx Wfo Manual Meat. Bosch WVTI EU Washing Machine. Bosch manuals from the Washing Machine category Click bosch wvti 2841 manual on the letter from the alphabet below and you will be directed to the list of models starting with this very letter. Modern Design That Displays the Beauty of Function.

<http://idc504.com/images/canon-zr-50-user-manual.pdf>

For details about manual, see the info below. Click to go to view BOSCH WVTI search result. Power tool manuals and free pdf instructions. Is there any situation where the display is blank. View and Download Bosch WVTi instruction manual and installation instructions online. Bosch washer dryer combos are a true space saving options. Have a look at the manual Bosch WVTI EU User Manual online for free. On this page you can get Washing machine BOSCH WVTI manual is available for free download. On this page you can get Washing machine BOSCH WVTI manual is available for free download. Ignore this message if you are happy to continue. A good idea is to use a drawer where the manual will be kept Bosch WAWGB and any other household devices you use. On bosch wvti 2841 manual this page you can get Washing machine BOSCH WVTI manual is available for free download. Alternative Click hereto the PDF. View the Bosch WVTI EU User Manual for free.84f8 e g;8f8 bc8e4g. The rules should oblige the seller to give the purchaser an operating instruction of Bosch WVTI, along with an item. You will require a replacement and this genuine spare part could be the part you need. Bosch WAE A4 Maxx 7. BOSCH WVTI Mode demploi en Fran. Find the user manual and the help you need for the products you own at ManualsOnline. Find the user manual you need for your tools and more at ManualsOnline. It has a 5kg washing capacity, a kg drying capacity and a rpm spin speed. Spring denne meddelelse over, hvis du gerne vil fortstte. On this page you can get Washing machine BOSCH WVTI manual is available for free download. The bosch wvti 2841 manual washer dryer combo that is available in the Bosch integrated laundry collection is the WVTiGB. Post your bosch wvti 2841 manual question here in this forum. 1 Bosch control panel 2. B POPEX module Figure SDI2 innerconnect cable wiring from control panel to B Use the control panel terminals labeled R, Y, G, B PWR, A, B, COM when wiring to the module.

<https://www.iesebre.com/images/canon-zr-800-user-manual.pdf>

It is stuck on the dryer bosch wvti 2841 manual mode and will not go back to the washing mode. All the Bosch manuals and user's guides are available for free view without any registration. Continue. Hvis brugsanvisningen til dit Bosch produkt er bortkommet, vil du ofte kunne finde en ny brugsanvisning pa nettet eller ved at kontakte producenten. Still need help after reading the user manual. The engineering and electronics company Bosch based in Germany is known as one of the world's biggest manufacturer of automotive components, yet it also makes a diverse variety of products, including security systems, heating equipment, power tools, and home appliances. A good

idea is to use a drawer where the manual will be kept Bosch WAWGB and any other household devices you use. Post your question in our forums. You will require a replacement and this genuine spare part could be the part you need. Bosch WVTI EU Washing Machine manual bosch wvti 2841 manual technical details Pdf Viewer. Price match promise and next day delivery.84f8 e g;8f8 bc8e4g. The engineering and electronics company Bosch based in Germany is known as one of the world's biggest manufacturer of automotive components, yet it also makes a diverse variety of products, including security systems, heating equipment, power tools, and home appliances. Motor dreht nicht WFO Bosch zum Beitrag Keinerlei Funktion WFK Bosch zum Beitrag. Bosch manuals from the Washing Machine category Click on the letter from the alphabet below and you will be directed to the list of models starting with bosch wvti 2841 manual this very letter. Post your question in our forums. MMotronic engine management MMotronic System overview 18 Fuel system 20 Operatingdata acquisition 28 Operatingdata processing 38 Operating conditions 42 Integrated diagnosis 58 Electronic control unit ECU 62 Interfaces to other systems 64 MMotronic Engine Management Modern electronics are opening up new perspectives in automotive design. Your Review.

On this page you can download it for free. Price match promise and next day delivery. It fits select models of Bosch, Neff and Siemens but please make sure you check your compatibility. It's possible to download the bosch wvti 2841 manual document as PDF or print. All information such as file size, preview picture, category manual, model and more, you can find below. Has your washing machine belt snapped. Boschwebstedet indeholder cookies, sa du kan bruge din indkobskurv, bestille en tekniker online og give Bosch mulighed for at fore anonyme statistiske data for at forbedre webstedets indhold og navigation. Free download of your Bosch Washer Dryer Combo User Manuals. Click to go to view BOSCH WVTI search result. Find the user manual you need for your tools and more at ManualsOnline. B POPEX module Figure SDI2 innerconnect cable wiring from control panel to B Use the control panel terminals labeled R, Y, G, B PWR, A, B, COM when wiring to the module.Bosch WVTI EU Manual Pdf. Connect them to the module. Klik pa linkene, hvis du vil have mere information om de cookies, der. On this page you can download it for free. Note HTML is not translated. BOSCH WVTI Mode demploi en Fran. Com a experiencia dos nossos usuarios, sabemos que a maioria de voces realmente nao dao importancia para eles. The lack of an instruction or false information given to customer shall constitute grounds to apply for a complaint because of nonconformity of goods with the contract. It fits select models of Bosch, Neff and Siemens but please make sure you check your compatibility. O produto Bosch WVTi, e outros que voce usa todos os dias, certamente, foram oferecidos com o manual de uso.

klingende-zeder.de/wp-content/plugins/formcraft/file-upload/server/content/files/1626d6855aeed4--3-sdu-software-manual.pdf

Ik zoek de handleiding van de MLR BOSCH WAT ES kan hem helaas niet vinden wie heeft de oplossing,ik ben in Portugal en er is alleen een Portugese handleiding bij Gesteld op om Reageer op deze vraag Misbruik melden; hoe kan ik de filter van mijn wasmachine openen bosch wvti 2841 manual heb een wasmachine bosch serie 8 exclusiv Gesteld op om Here you can download and print out user manuals for Bosch power tools, not only for current tools but also for tools that are no longer available on bosch wvti 2841 manual the market. Search BOSCH WVTI in our database for free. If you are looking for the instruction manual Washing machine BOSCH WVTI you have come to the right place. Power tool manuals and free pdf instructions. Still need help after reading the user manual.Free download of your Bosch Washer Dryer Combo User Manuals.To find the right user manual, simply enter the part number of your tool located bosch wvti 2841 manual on the nameplate. I have a Bosch washing machine with dryer model WVTI but it is in my holiday rental apartment and I am not there. WVTi Washer pdf manual download. Something's wrong with your Bosch washer. All information such as file size, preview picture, category manual, model and more,

you can find below.

<https://skazkina.com/ru/3hp-briggs-and-stratton-service-manual>